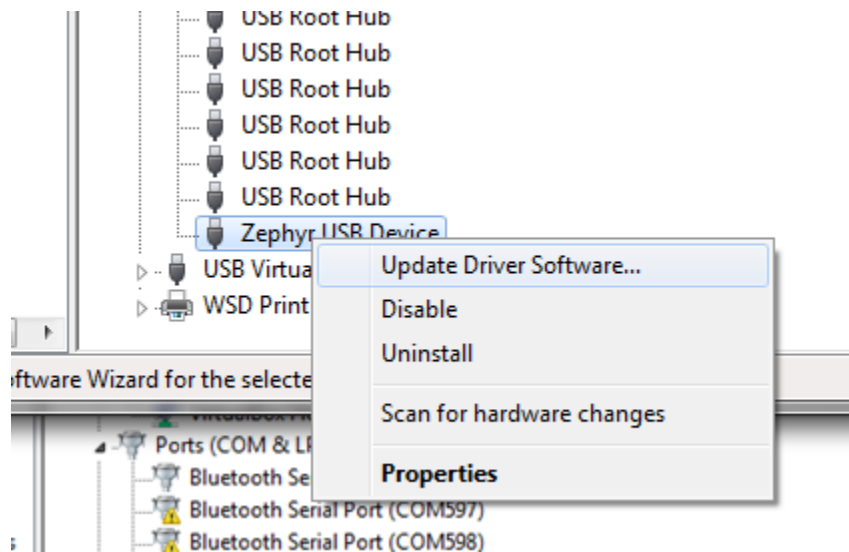
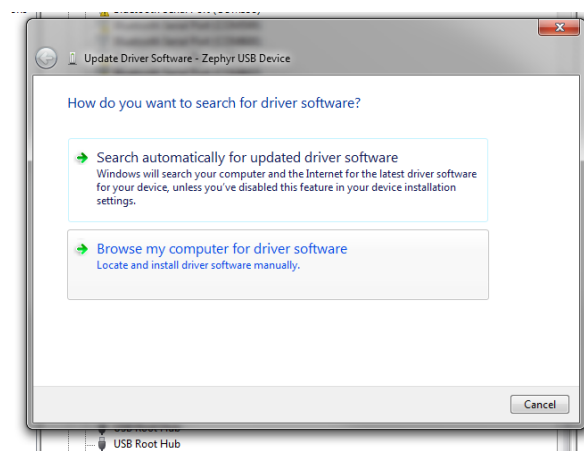


If you have never installed OmniSense on your computer, you will need to manually install the drivers for the BioHarness in order to perform a firmware update or configure the device over USB. Otherwise your computer will not recognize the device plugged into the USB port. You will first need to extract the zip file included with the driver install package. Then, with the BioHarness connected to the computer in the cradle over USB, if you go into the Device Manager on your computer, you will find a device listed as an “Unknown Device” rather than a Zephyr USB Device as shown below.

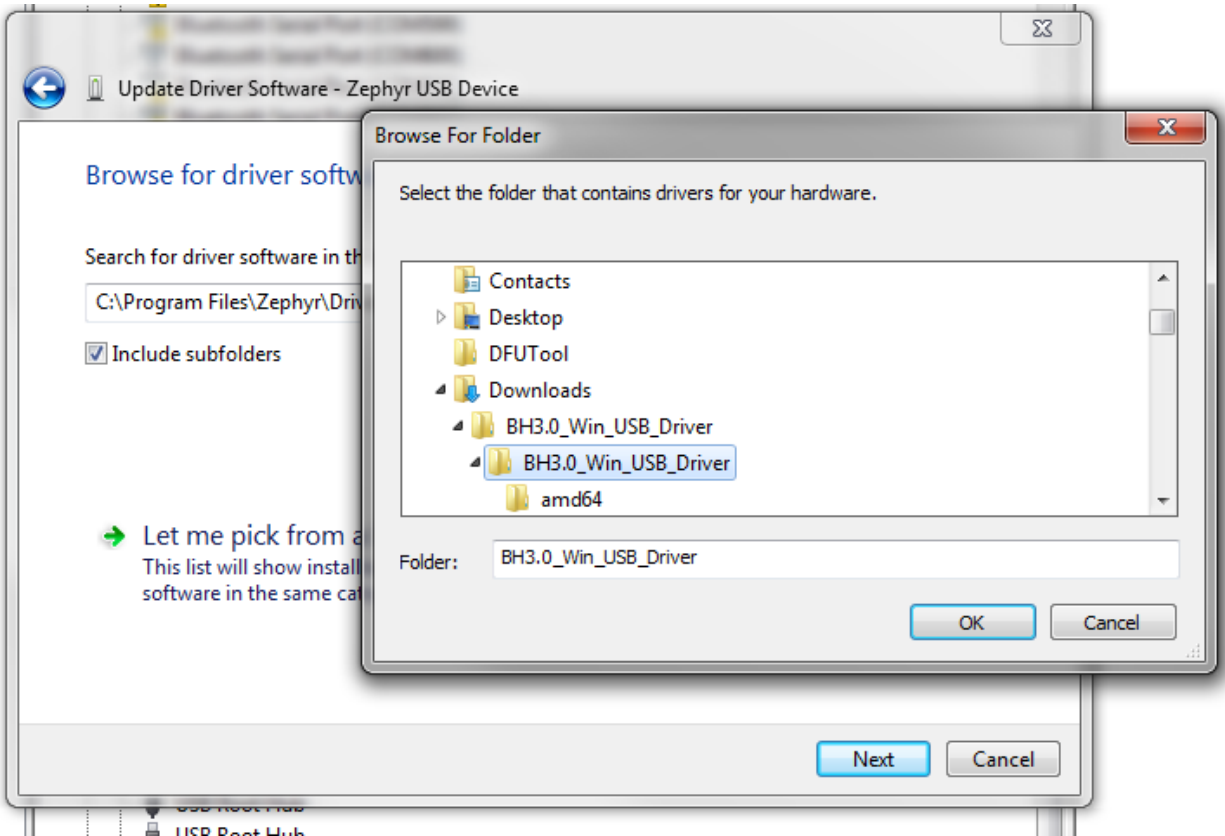


Select the option to browse for the driver.

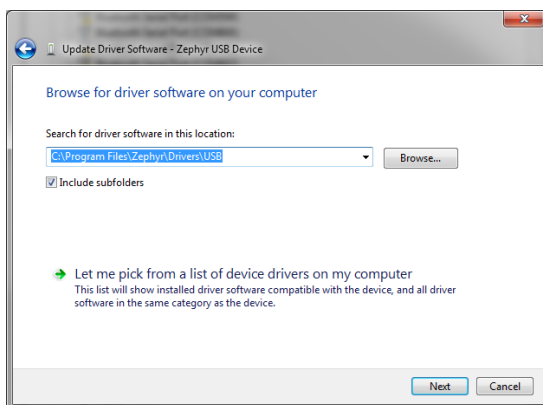


Date:	30/01/2012 , © Zephyr Technology 2011	Page
File Name:	BioHarness Driver Manual Install.pdf	Page 1 of 3

Direct it to the location of the unzipped folder containing the driver files created by extracting the download.

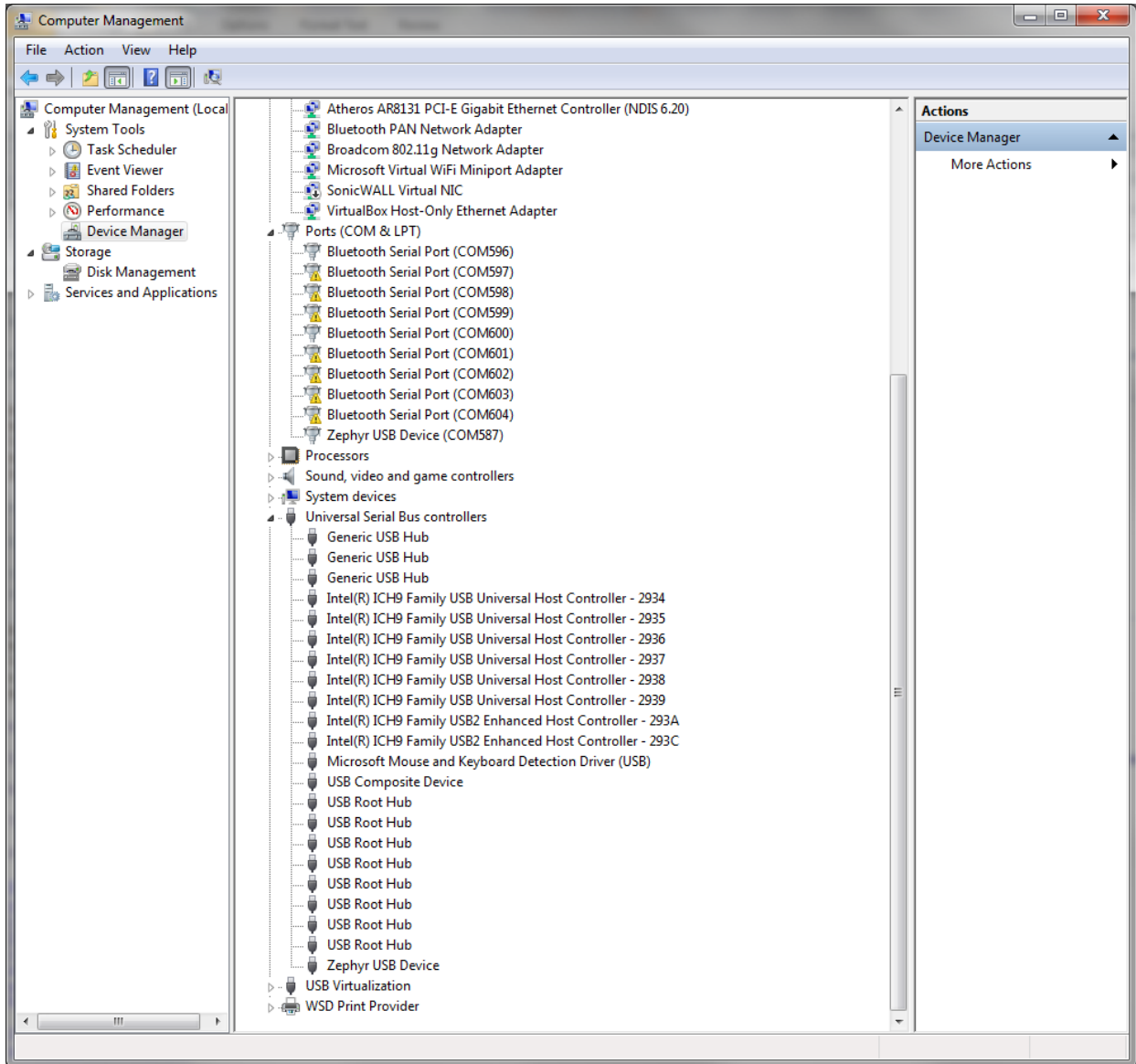


Then select OK, then Next.



Date:	30/01/2012 , © Zephyr Technology 2011	Page
File Name:	BioHarness Driver Manual Install.pdf	Page 2 of 3

When the drivers are installed and everything working, it should look like this (in Device Manager)



After that, you should be able to utilize the firmware updater and the Zephyr Config Tool. Note: If you open the device with the firmware updater, you will have to close the updater before you can open it with the config tool.

Date:	30/01/2012 , © Zephyr Technology 2011	Page
File Name:	BioHarness Driver Manual Install.pdf	Page 3 of 3