

Overview

SOFTWARE

- Falconview should be pre-installed, with required mapping files, on the host PC platform.
- Install OmniSense
- Install OmniSense biodata plug-in for Falconview

The OmniSense Application should be running before Falconview is started. The red Zephyr toolbar icon which activates the biodata plug-in is visible on the toolbar.

HARDWARE

Subject, BioHarness and Radio Interface Device (RID) details should be added to the OmniSense database – instructions are supplied with the PSM & OmniSense User Guides.

In addition, each RID must be manually configured with the MAC address and PIN of the Bluetooth GPS device with which it will be paired, using a Zephyr BioHarness BT configuration Tool.

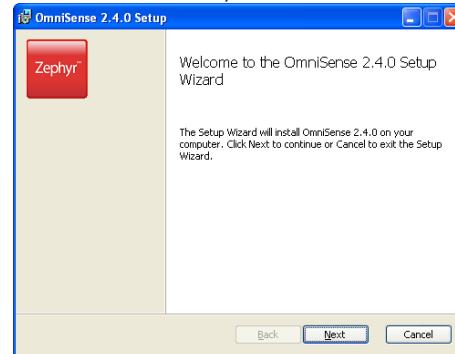
Software Installation

FALCONVIEW

Follow the instructions supplied with the software to install the application, including any mapping files required.

OMNISENSE

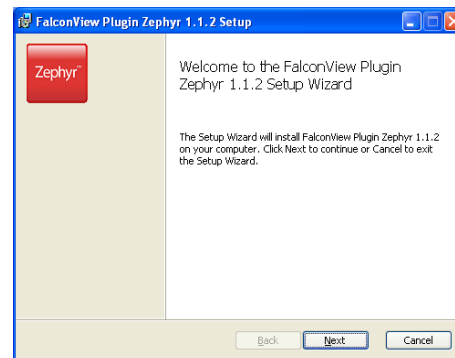
From the files provided, use the *Setup.exe* file to initiate installation, and follow the install Wizard.



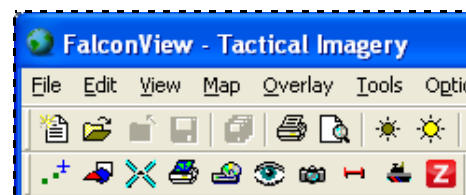
Full Instructions are supplied with the *OmniSense Software Installation Guide* document which is supplied with the software.

OMNISENSE FALCONVIEW PLUGIN

From the files provided, use the *FVZephyrInstaller.msi* file to initiate installation, and follow the install Wizard.



When installed, a red Zephyr button will appear on the FV toolbar.



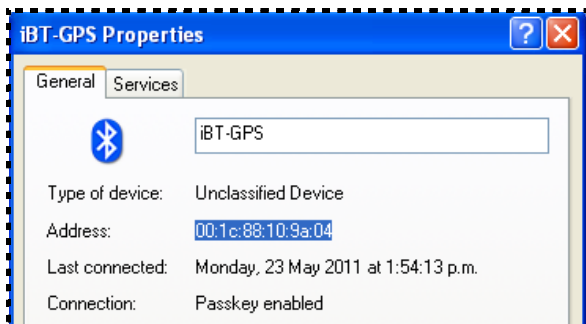
OmniSense Falconview Integration

Hardware

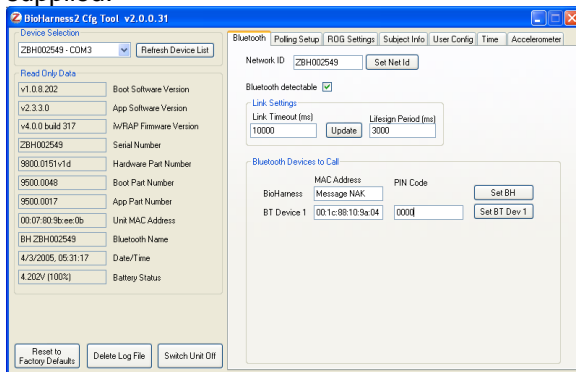
BioHarness modules and Radio Interface Devices should be added to the OmniSense database as described in the *OmniSense Live User Guide* and *PSM Defense User Guide* manuals supplied with the system.

In addition, each Radio Interface Device must be configured with the MAC address of the Bluetooth GPS unit it is to be paired with:

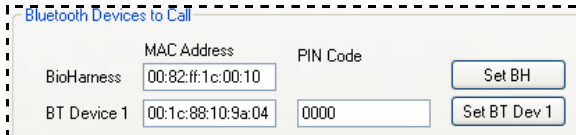
1. Determine the MAC address of the GPS module, using a PC to detect the device, if the MAC address (and PIN No – '0000' for Qstarz) are not supplied with the unit



2. Connect the Radio Interface Device to a PC via the USB config block and open the *BioHarness BT CfgTool* (v2.0.0.31 or later) supplied.



3. In the *Bluetooth* tab, *Bluetooth Devices to Call* pane, enter the GPS MAC & PIN details of the GPS unit in the *BT Device 1* fields

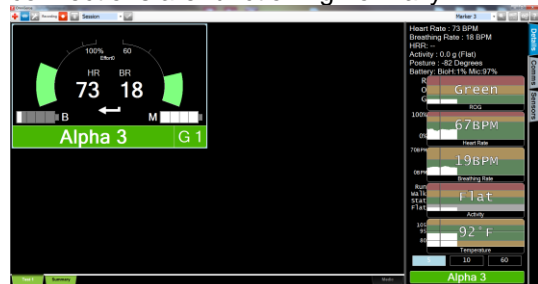


and click the *Set BT Dev 1* button to configure the BioHarness module.

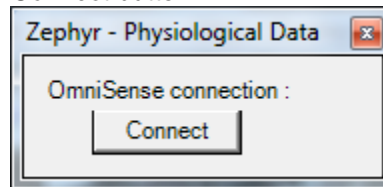
4. NB – BioHarness modules should have firmware version 2.3.1.0 or later. Trellisware RID devices should have firmware version 1.0.5.204 or later.

Operation

1. Fit and power on all BioHarness hardware, radios and GPS devices.
2. Start OmniSense – it must be active so that Falconview can access the OmniSense database. Establish that all radio & Bluetooth connections are functioning normally.



3. Start the Falconview application, and click the red Zephyr icon on the toolbar. Click the *Connect* button



4. In the map display, *double-click* the subject position marker to display the subject's BioGauge.



The BioGauge can be resized. An icon top left shows red if no fresh GPS data.